



Belmond Villa San Michele Exhibition 2020

iguarnieri







6

"SUMMER 2019" DETAIL
GOLD LEAF PLATING & PIETRA SERENA ON FRESCO PAINTING
732 X 250 CM | 24 X 8 FEET



"GOLD POPPIES" DETAIL
GOLD LEAF AND FRESCO PAINTING ON WOOD WITH FINISHING TOUCHES
160 X 200 CM | 63 X 78 INCH



“CHAMPAGNE COCKTAIL”

FRESCO PAINTING ON WOOD WITH FINISHING TOUCHES

70 X 70 CM | 27,5 X 27,5 INCH



"GRAFFITO POPPIES"

INCISION AND PAINTING ON ALUMINUM PLATE SURFACE

40 X 50 CM | 15 X 19 INCH

"FLORENCE DOME GREEN II"

FRESCO PAINTING ON WOOD WITH FINISHING TOUCHES

97 X 126 / 38 X 49.5 INCH







“KITE”

FRESCO PAINTING ON WOOD WITH FINISHING TOUCHES

116 X 175 CM | 45 X 68,8 INCH

ΝΙΚΟΛΑΟΣ ΚΑΡΑΓΙΩΡΓΙΩΤΗΣ

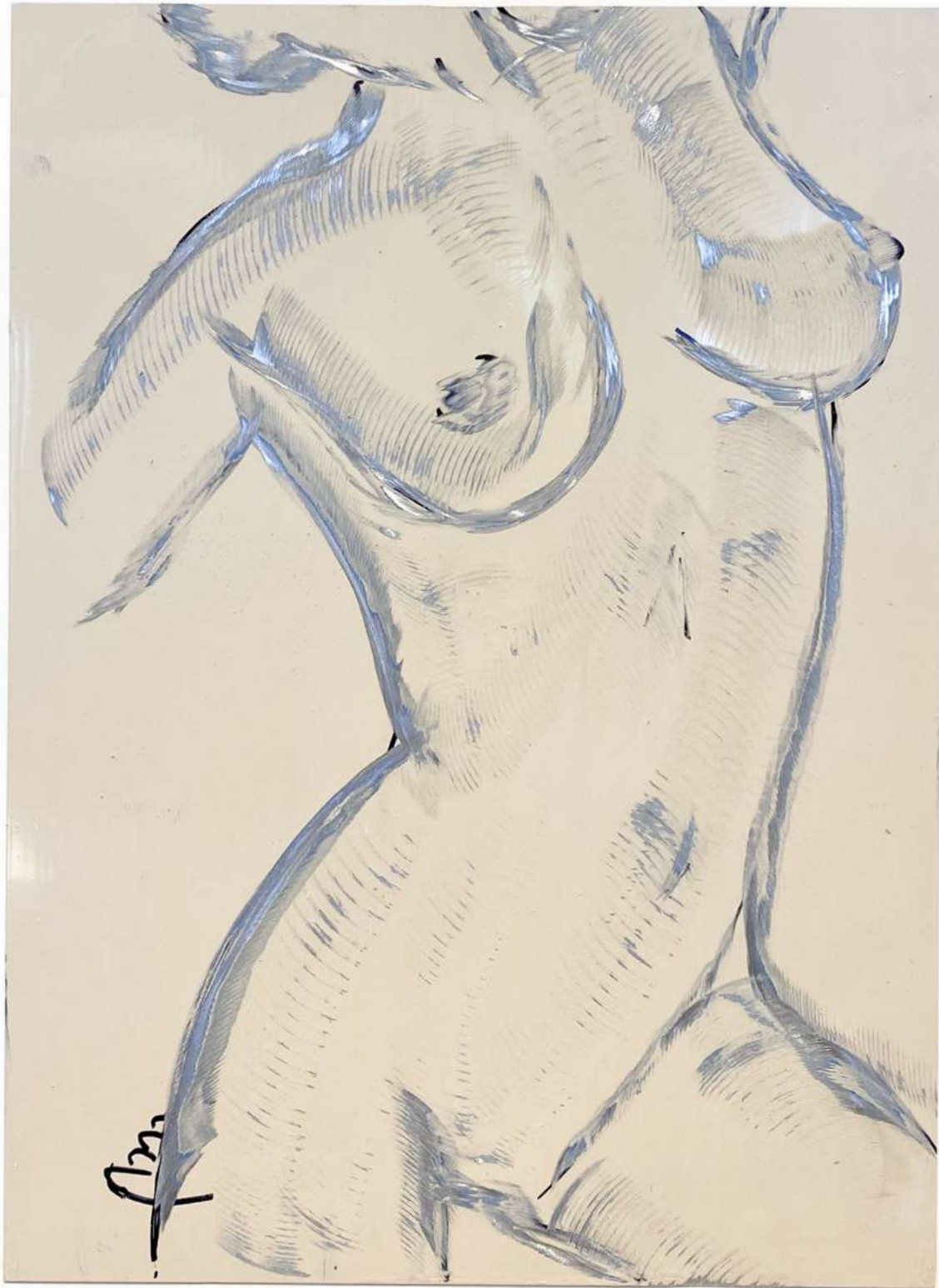


“VILLA SAN MICHELE B & W”
 FRESCO PAINTING ON WOOD WITH FINISHING TOUCHES
 91 X 187 CM. | 35,8 X 73,6 INCH



“WHITE POPPIES VERTICAL”
 FRESCO PAINTING ON WOOD WITH FINISHING TOUCHES
 80 X 160 CM. | 31 X 62 INCH.





“FLORENCE DOME LANDSCAPE DETAIL”

FRESCO PAINTING ON WOOD WITH FINISHING TOUCHES

107 X 182 CM / 42 X 71 INCH



“FLORENCE DOME LANDSCAPE DETAIL”

FRESCO PAINTING ON WOOD WITH FINISHING TOUCHES

107 X 182 CM / 42 X 71 INCH



“CUPOLINE”
CERAMIC PAINTING



"FIRENZE SUNRISE"
FRESCO PAINTING ON WOOD WITH FINISHING TOUCHES
470 X 125 CM. | 15,4 X 4 FEET

GRAFFITTO

The graffito technique is a traditional art in which figures, writings, decorations and ornaments are obtained by engraving and working in fresco with a pointed instrument on a plastered surface. This technique has been used in Europe since classical times, it was popularized in Italy in the 15th and 16th centuries.

The graffito was usually monochrome or has a predominant color, based on the contrasts of chiaroscuro white and black, rather than using a wide palette of colors.

Although this old technique reinterpreted in a contemporary key by Iguarnieri has a step forward in this field, after a long research and study of the material, the colors were added to the technique and so the final artwork has more layers and brightness in the shadow, light and contrast game of each piece.

The surface chosen for this graffito technique by the artist is the metal, aluminium plates surfaces.

The procedure as once was, is essentially the same, a work on different layers, but instead to work on plaster the main element is the metal. A layer of painting comes applied to the surface, once it gets dry another layer for the design comes made.

After this almost immediately with the adapted instrument? Then follows the drawing and the surface is scratched with a pointed iron in order to bring to light the dark layer of background. Every different pressure of the engraving produces different graffito effects, enhanced by the direction of light.







All the artworks in exhibition are available on the website www.iguarnieri.it
Our Studio is in the downtown, Lungarno Benvenuto Cellini 39.
You can book an appointment with the Artist for visit the Art Gallery and all the artworks.
Just call Roberto or Rodolfo at +393338348277 or +393356129907





